

EX-SERIES

Install Manual



 Proxess

To learn more: visit
www.proxess.com or call (303) 317-
6656

Table of Contents

Documentation	2
Battery Information	3
Parts Blowup	4
Hardware Contents & Cylinder Specs	5
Drill template	6
Installation Instructions	7
Rehanding Guide	11

COPYRIGHT

Copyright ©2022 Proxess, LLC. All rights reserved. Printed in the United States of America. Information in this document is subject to change without notice and does not represent a commitment on the part of Proxess, LLC. The software described in this document are furnished under a license agreement or nondisclosure agreement. This publication is intended to be an accurate description and set of instructions pertaining to its subject matter. However, as with any publication of this complexity, errors or omissions are possible. Please call Proxess corporate offices at (303) 317-6656 if you see any errors or have any questions. No part of this manual and/or databases may be reproduced or transmitted in any form or by any means, electronic or mechanical, including photocopying, recording, or information storage and retrieval systems, for any purpose, without the express written permission of Proxess, LLC. This document is distributed as is, without warranty of any kind, either express or implied, respecting the contents of this book, including but not limited to implied warranties for the publication's quality, performance, merchantability, or fitness for any particular purpose. Neither Proxess, LLC nor its dealers or distributors shall be liable to the user or any other person or entity with respect to any liability, loss, or damage caused or alleged to be caused directly or indirectly by this publication.

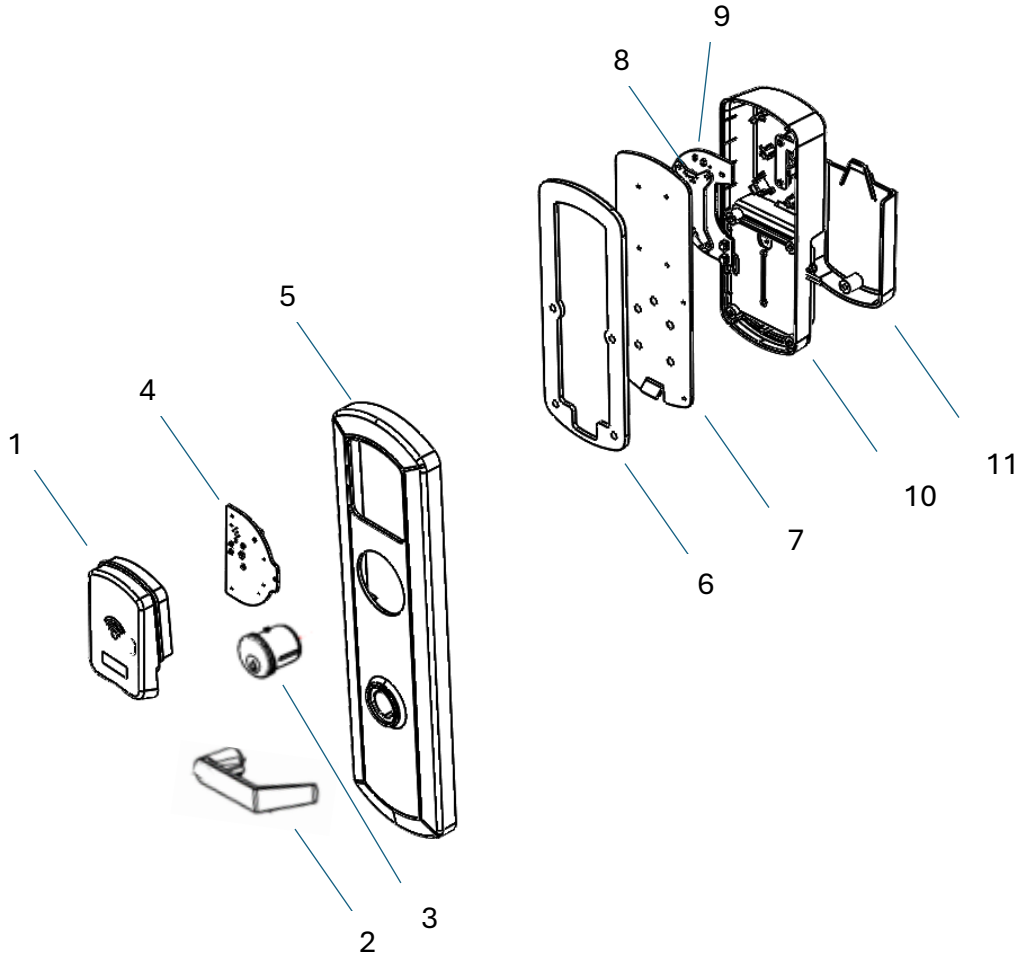
TECHNICAL SUPPORT

The first source for technical answers is this EX Series Install Manual. All documentation and training materials are also available on our website: www.proxess.com. If you are not able to find an answer in this manual, contact your local Proxess Representative. If you do not know your local Proxess Representative, contact the Customer Service Department at Proxess (303) 317-6656.

BATTERY PERFORMANCE AND EXTREME CLIMATE USE

- Proxess locks use four AA batteries and are tested and validated using Duracell Coppertop™ alkaline batteries to over 50,000 cycles with physical credentials and over 70,000 cycles with only mobile credentials. Proxess locks are tested and validated using Energizer Ultimate Lithium™ batteries for extended temperature range support and offer similar performance to Duracell Coppertop™ batteries. However, any quality AA alkaline or non-rechargeable lithium battery should give acceptable performance.
- Average/Expected performance = 2 years (approximately 68 credential entries per day)
- Batteries are not covered under Proxess warranty.
- Disclaimer: Performance may vary based on environment, feature use, credential usage/type, how often the locks are synced, etc. Contact Proxess for questions related to expected performance in your system.
- For heavy usage doors that drain power in less than a year, Proxess recommends either a modified maintenance schedule or the external power feature (specify “EP” feature when ordering).
- Exterior use: Standard Proxess locks are approved for exterior use when the interior trim is not constantly exposed to exterior weather. For locks in which the interior trim is entirely exposed to exterior climates (pool gates, etc.) Proxess recommends the weatherized option (specify “W” feature when ordering). Proxess weatherized locks offer protection to interior electronics from precipitation and improved corrosion resistance. Weatherized locks also feature Energizer Ultimate Lithium™ batteries for extended temperature range support in very hot and cold conditions.
- Reported battery percentages assume the use of alkaline batteries; lithium batteries do **NOT** report correctly.
- Rechargeable batteries are **not** recommended.
- **Avoid** Heavy Duty (Zinc Carbon) or other chemistry batteries.

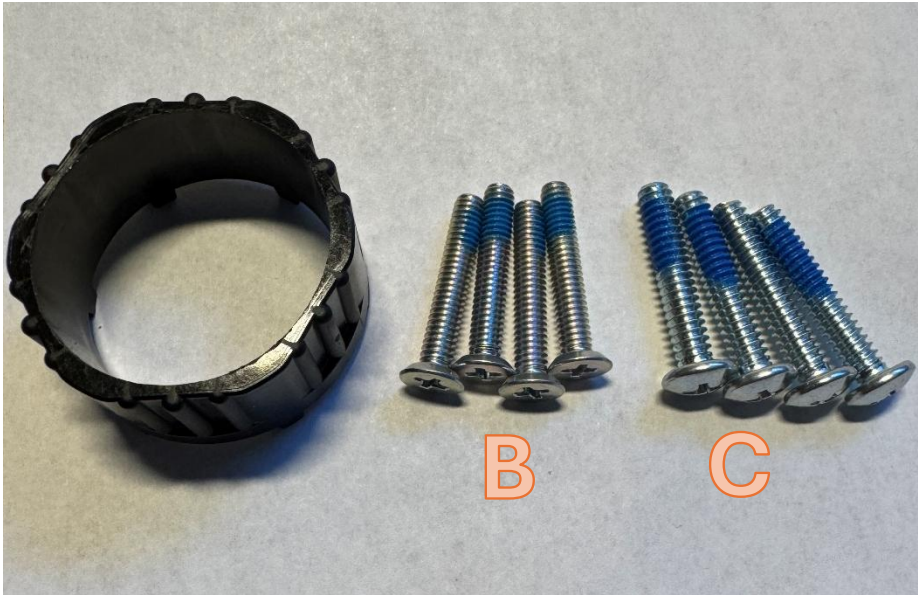
Parts Blowup



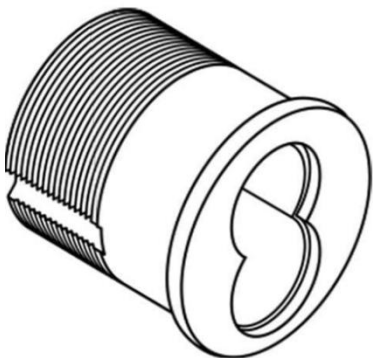
Part No.	Description
1.	Reader Plastic
2.	Lever
3.	Cylinder
4.	Reader Board
5.	Trim
6.	Gasket
7.	Backplate
8.	EZ Connect board
9.	Interior board
10.	Interior Plastic Trim
11.	Battery Door

Hardware pack

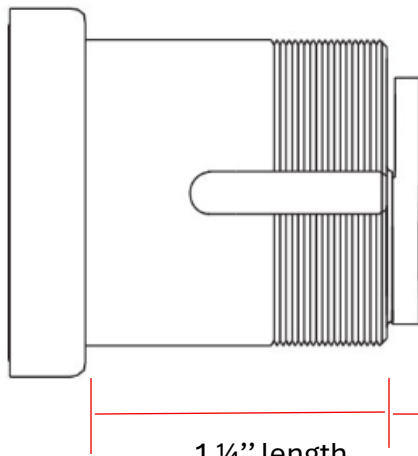
- 1 x Castle Nut Wrench
- 4 x "B" Phillips screws
- 4 x "C" Phillips screws



Cylinder Specs

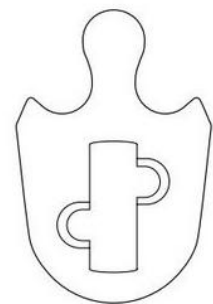


Small Format
Interchangeable Core



1 1/4" length

1 3/8" with cam



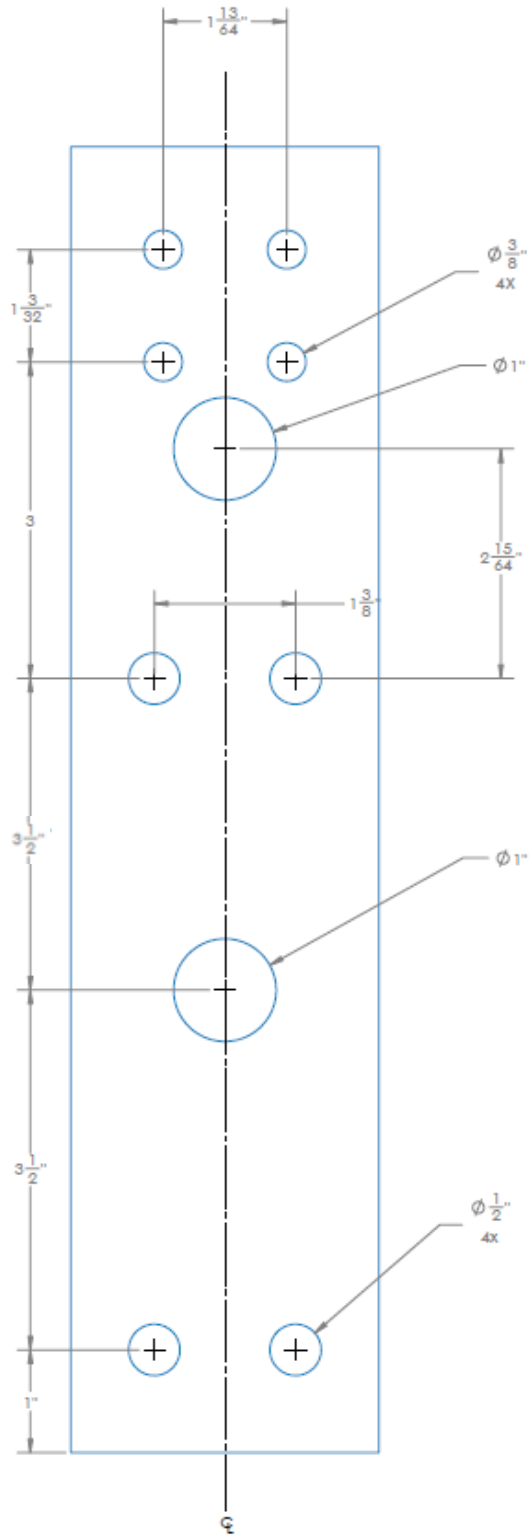
Clover Type Cam

Drill Template

Compatible Rim Devices

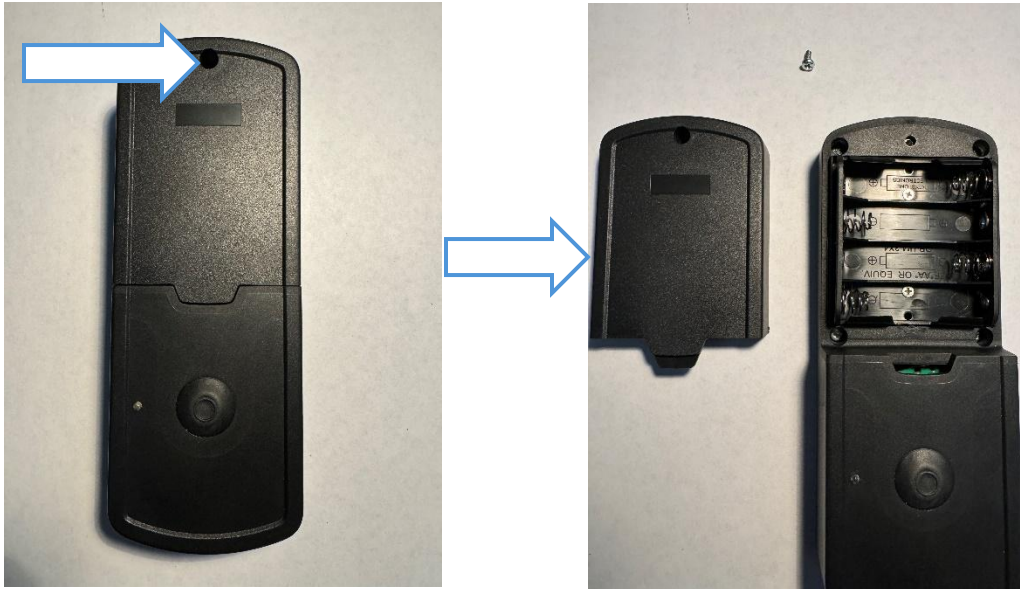
Include:

- Von Duprin 98 & 99
- Cal Royal 7200 series
- Detex 40 series
- Marks M9900
- Sargent 8810 series (with Proxess adapter plate)
- Precision 2100 (with Proxess adapter plate)



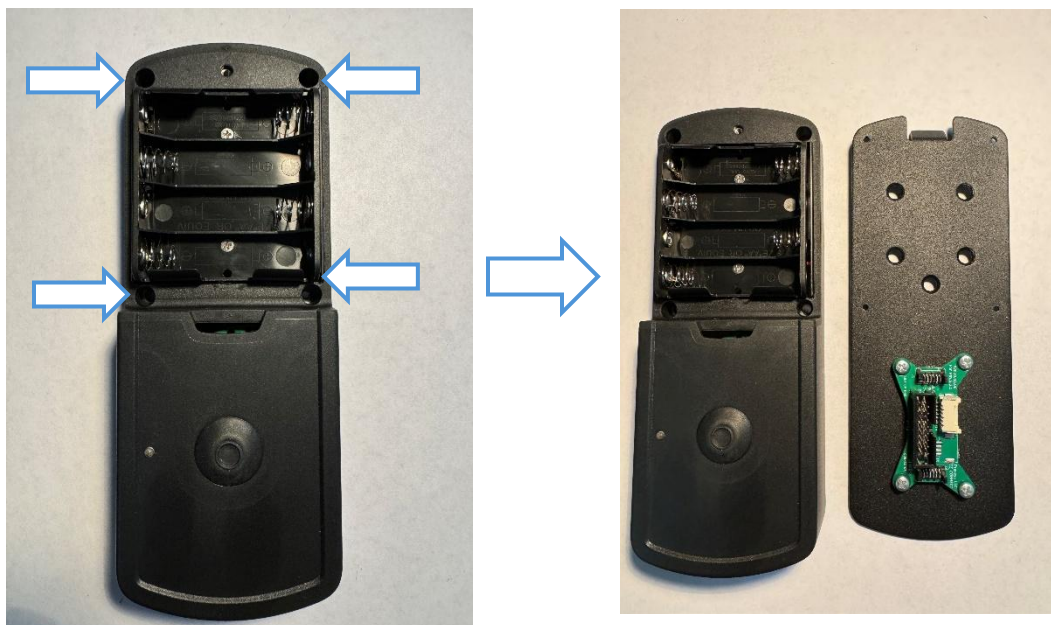
1. Prep Interior trim

- a. Remove battery door with Phillips screw

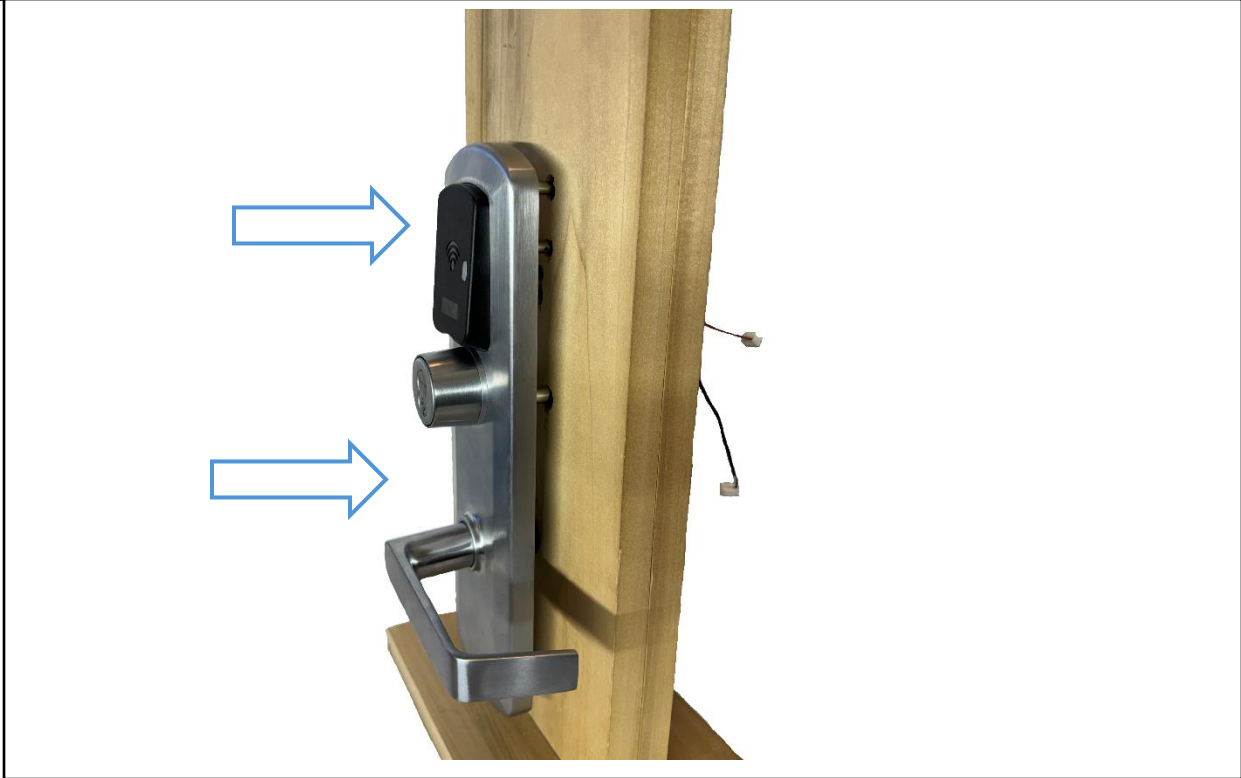


2. Separate the interior trim from the backplate

- a. Remove 4 Phillips screws

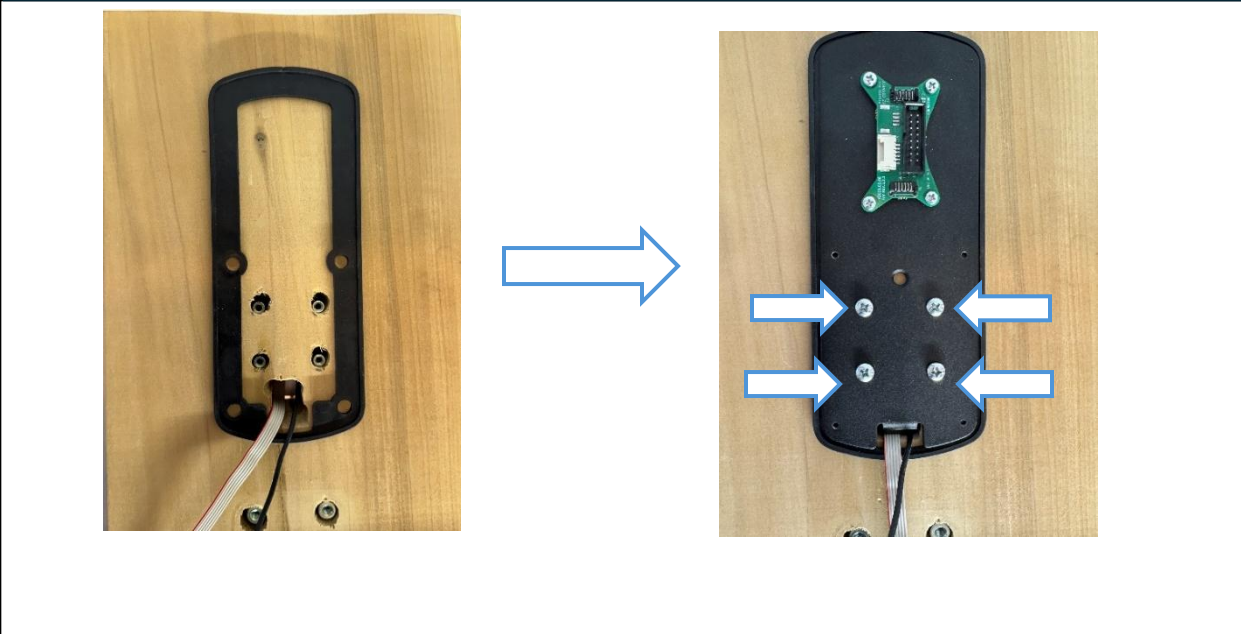


3. After Prepping the door, insert the exterior trim into the prepped holes



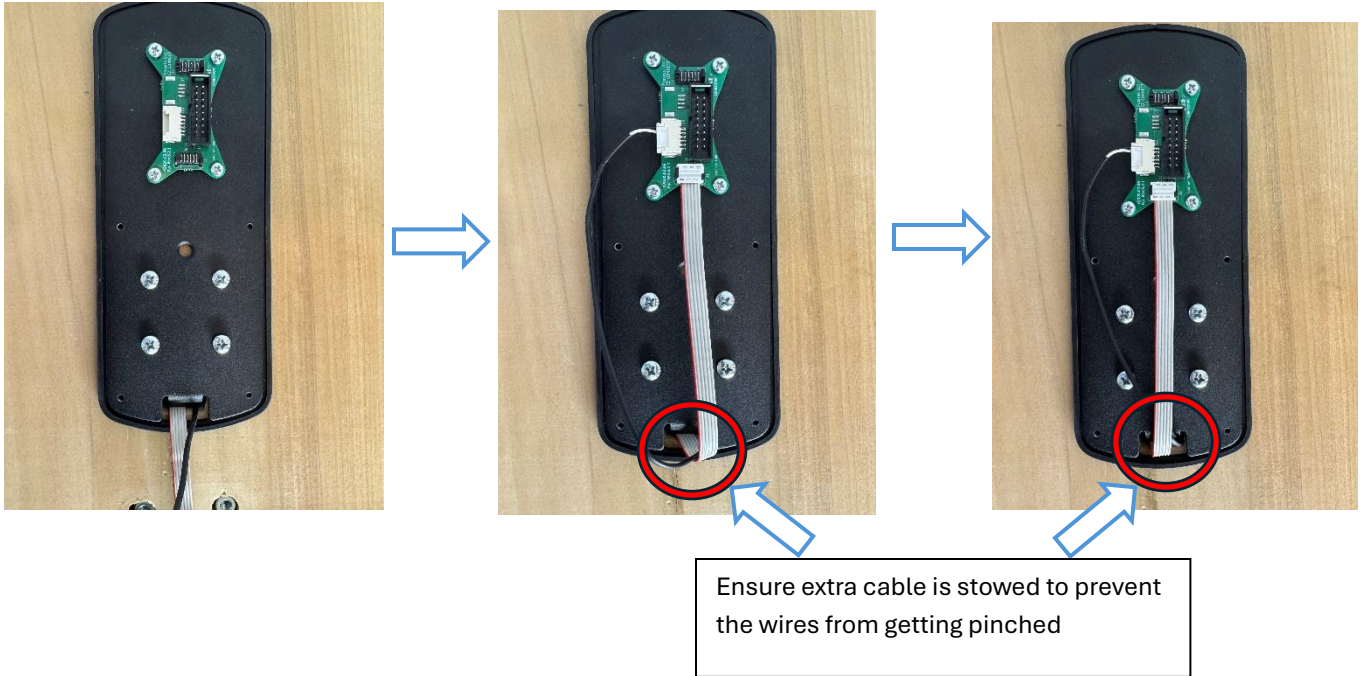
4. Install interior trim onto door

- a. Hold gasket on door and attach backplate to trim with 4 “B” Phillips screws.
- b. Gasket will be held onto door by backplate. The gasket has a lip on the outer edge that should wrap around the back



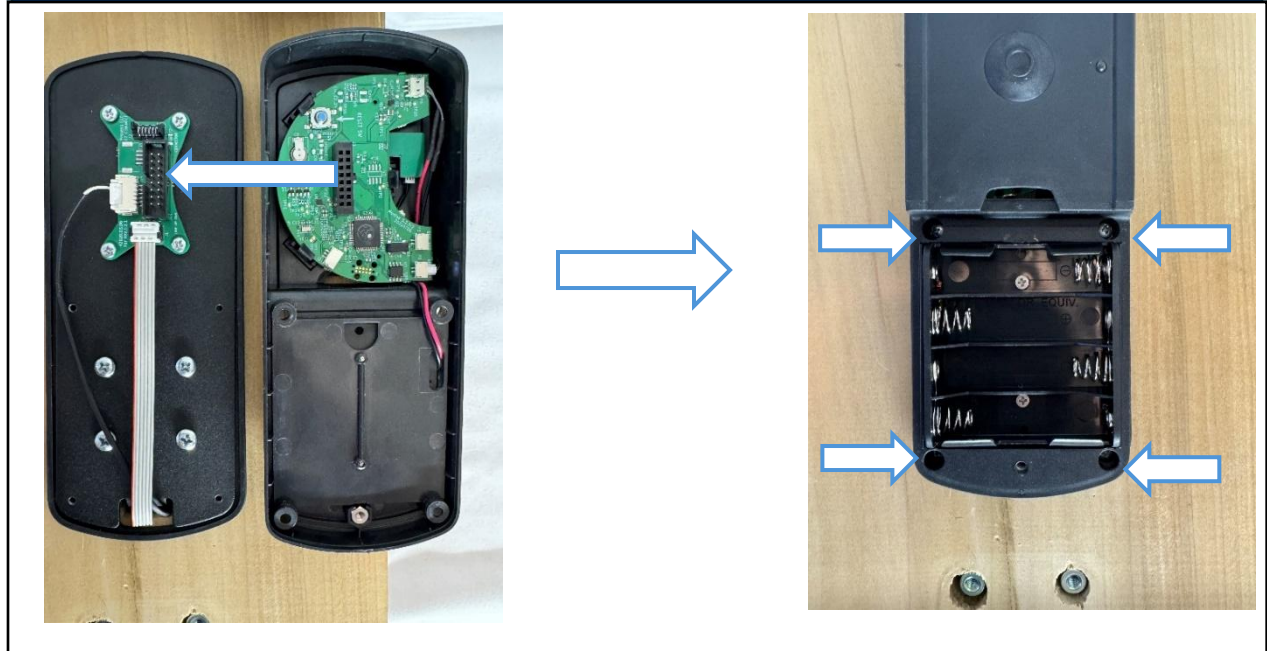
5. Connect Wires

- a. Connect 2-wire motor cable and 6 Pin ribbon to EZ connect board
- b. Stow excess cable in door space

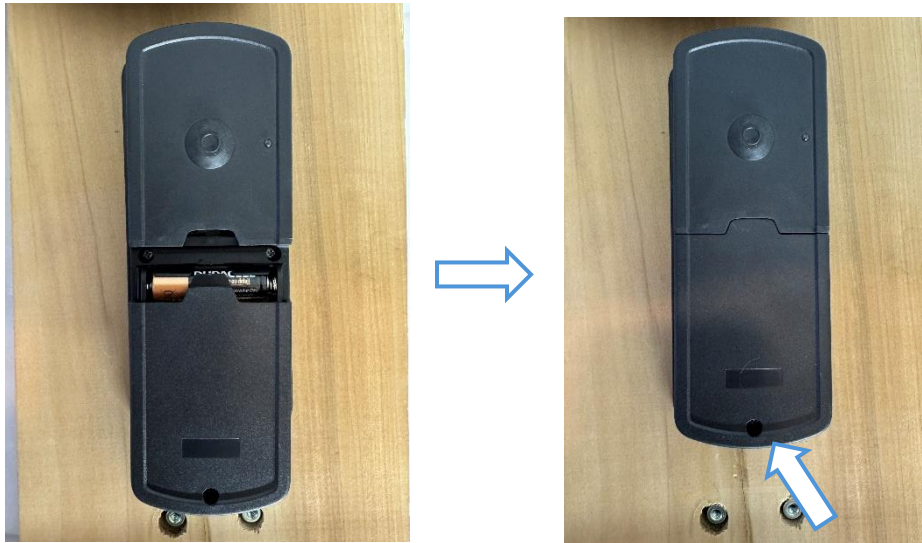


6. Plug female 16-pin connector on the exterior trim onto the EZ-connect boards male connector

- a. Secure exterior trim to backplate with 4 Phillips screws

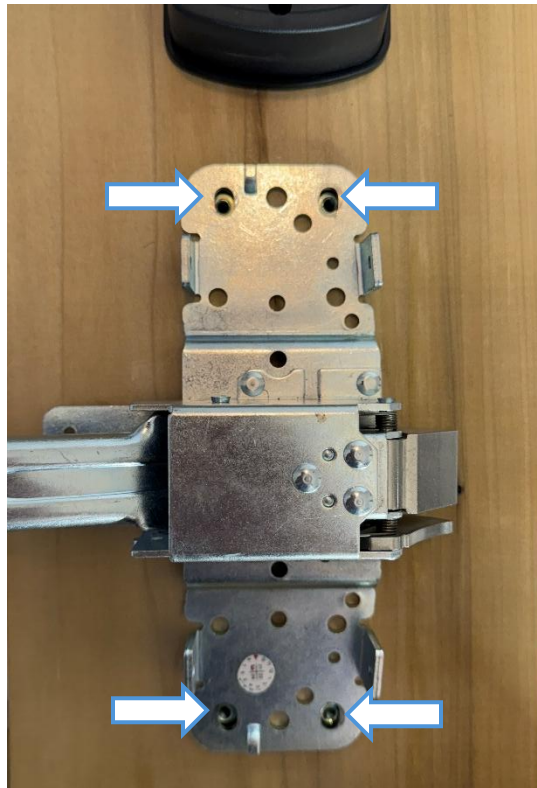


7. Secure battery door with Phillips Screw



8. Install Exit Device

- a. Secure head with 4 "C" Phillips screws
- b. Compatible with Vonduprin 98/99 rim & Detex 40 series rim devices. Contact Proxess to get a full list of compatible hardw



Rehanding Guide

- To change the Exit trim handing the rotation limiter (shown below) must be changed inside the device. They are specific to RHR and LHR configurations. This process is the same for converting to RHR or LHR.

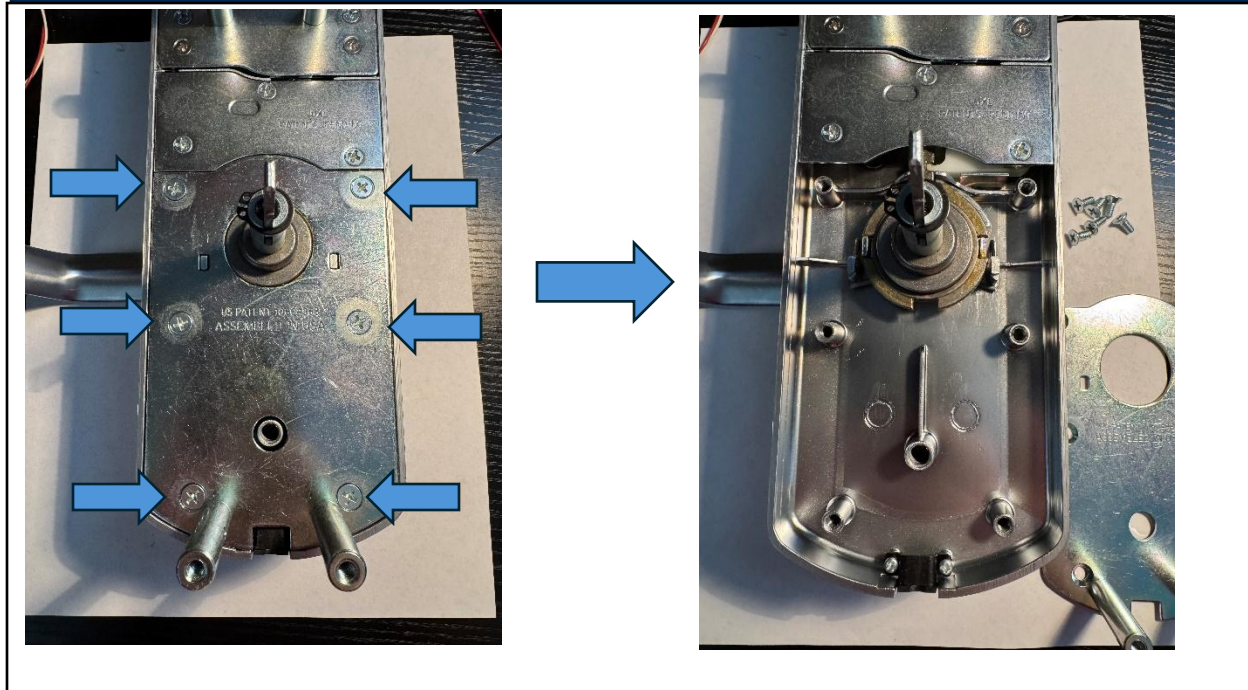


Note: The Limiters are two different parts, not the same part flipped over.

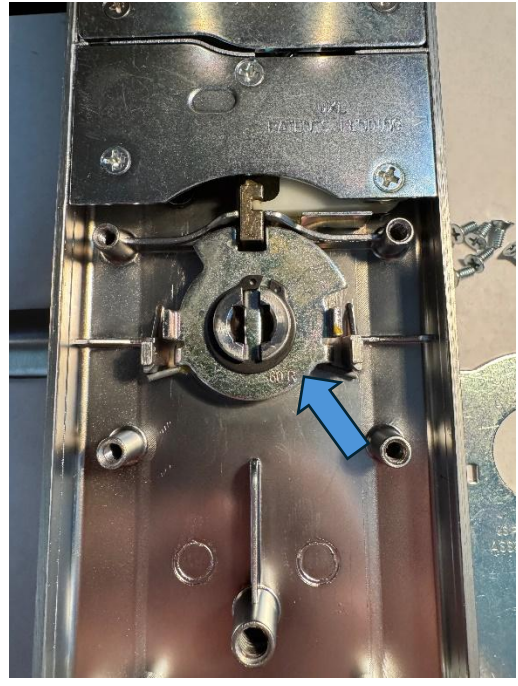
LHR

RHR

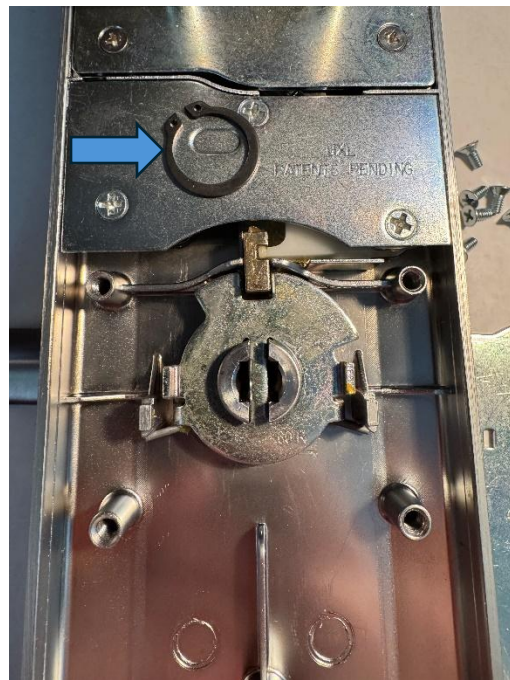
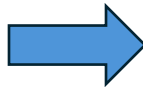
1. Remove the 6 Phillips screws from the bottom portion of the backplate and remove the part entirely



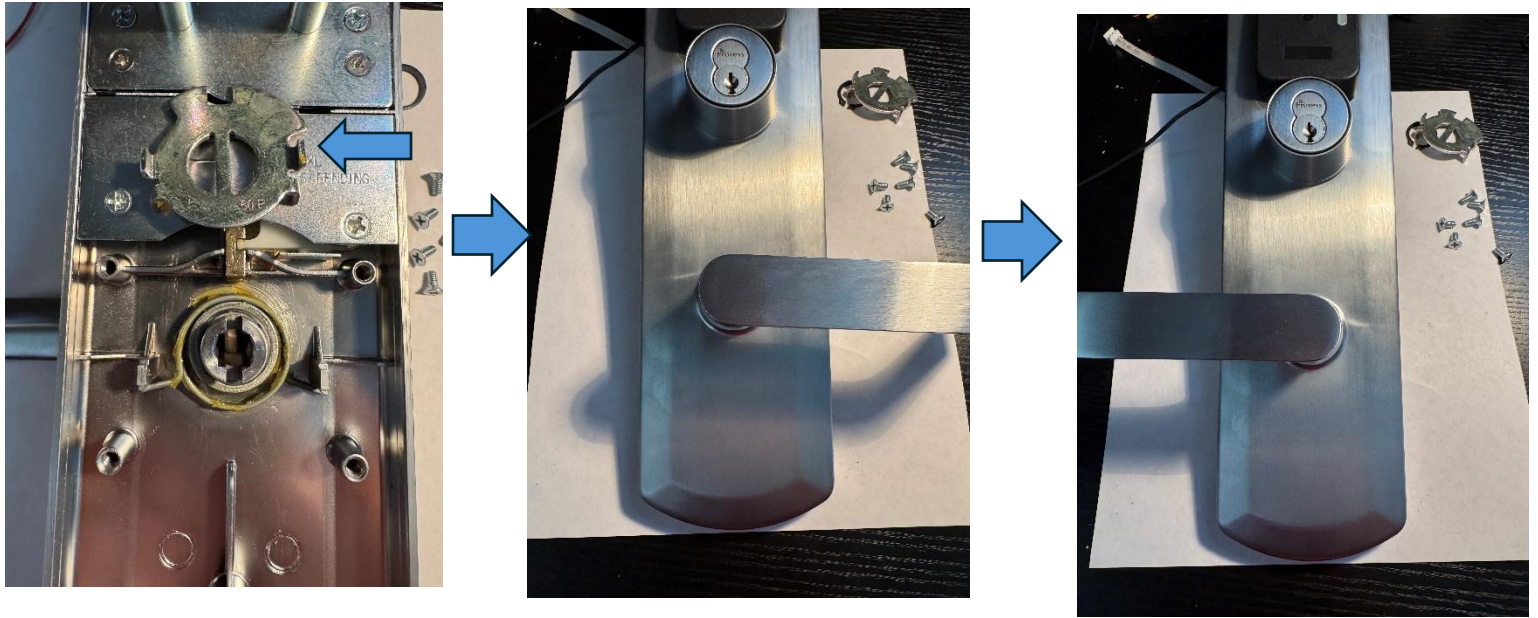
2. Remove the spindle to expose the rotation limiter



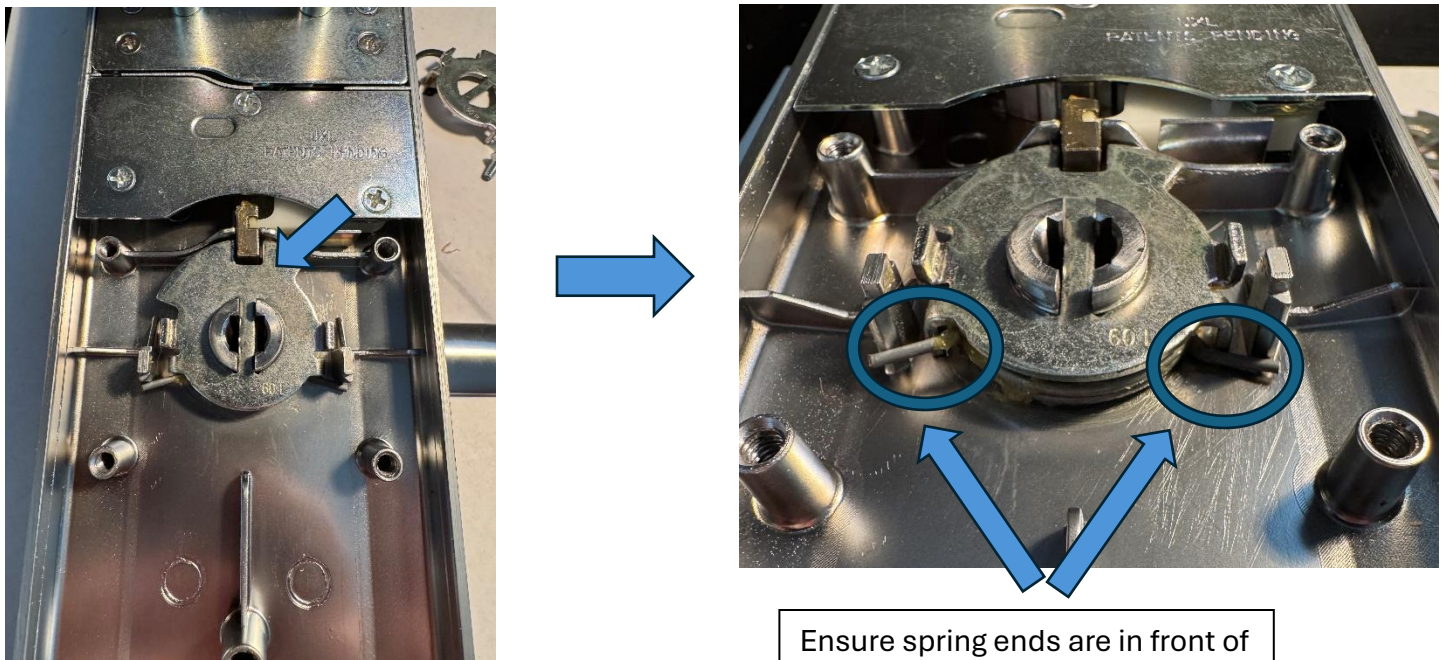
3. Using snap ring pliers remove the snap ring securing the rotation limiter in place



4. Remove the rotation limiter and turn the lever 108 degrees (do this carefully as there will be nothing holding the lever into the trim at this point)

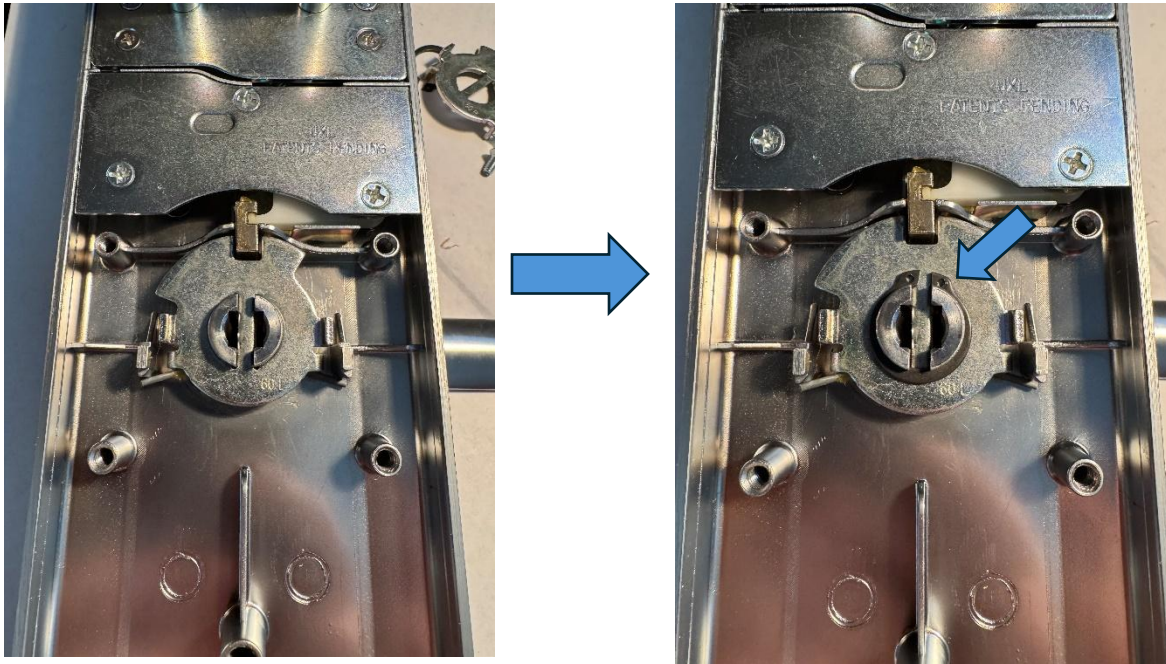


5. Install the new rotation limiter



Ensure spring ends are in front of the downward folded metal tabs on the rotation limiter

6. Reinstall the snap ring



7. Reinstall the spindle and backplate

